



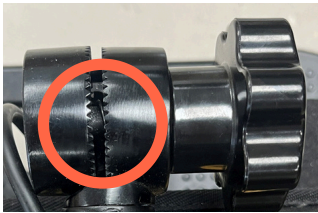
Before using, position the eFOLDi Compass in an open area away from pets and small children. Unfolding is easy, and you can set it up in seconds. We recommend practicing before your first outing.



HOW TO UNFOLD

STEP 1 – ASSEMBLE THE STEERING COLUMN

Remove all packaging before you begin.



Ensure the cog is loosened (anti-clockwise) & there is a gap between the teeth on the hinge.



Release the steering column from the plastic clip and lift into the upright position.



Secure the steering column by twisting the cog (clockwise). You can position the steering column to suit your reach & comfort



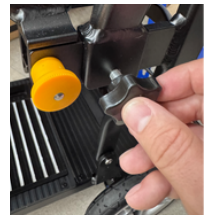
STEP 2 – RAISE THE SEAT



Lift the seat backrest into the upright position. It will “click” into place.



FITTING (OPTIONAL) ARMRESTS



Slot the armrests into place, line them up, and tighten using the large, easy-grip twist knobs.

FINAL SAFETY CHECKS



Ensure that the steering column is securely fastened, if not – tighten the cog.



Check that the red magnetic brake lever is in the LOCKED (backward) position to engage the motor.

GETTING STARTED



To turn on the scooter, press the grey button below the battery screen. Select (D) for Drive or (R) for Reverse, then press the thumb throttle to go. Be sure to re-charge the battery when the display shows amber.

HOW TO OPERATE



To charge, connect the power supply cable to the charging port located at the top of the steering column.



To remove the battery, lift the latch and carefully pull it upwards.

The charging port is located on the side of the battery.

HOW TO FOLD TO STORE

STEP 1 – FOLD THE BACK REST



Pull the yellow toggle to release the seat.



Fold the seat backrest down flat against the seat base, ensuring it passes and sits below the steering column cog.



The Compass always folds the same way, if it's fitted with or without armrests.

STEP 2 – COLLAPSE THE STEERING COLUMN



Release the steering column by twisting the cog (anti-clockwise).



Lay the steering column flat against the seat back and secure into the plastic clip

